



architects
engineers
www.woldae.com

305 Saint Peter Street
Saint Paul, MN 55102

tel 651 227 7773
fax 651 223 5646
mail@woldae.com

**ANDERSON - JOHNSON
ASSOCIATES,
INC.**



LANDSCAPE ARCHITECTURE • SITE PLANNING • CIVIL ENGINEERING
7575 GOLDEN VALLEY ROAD • SUITE 200 • MINNEAPOLIS, MN 55427
FAX (763) 544-0531 • PH (763) 544-7129



New Prague Area Schools

Athletic Track & Field Improvements

January 28, 2013





Introduction

Existing Conditions

Variations Considered

- Track Configurations
- Reuse Existing Top Soil
- Sand / Peat Prescribed Topsoil
- Synthetic Turf

Preliminary Budgets

Q+A

Existing Conditions



- 9 Lane Track
- Long Straight Runs / Tighter Turns
- Interior Football / Narrow Soccer + La Crosse
- 8 Interior Light Posts

- *Track Deteriorated – New Surface Not Enough*
- *Objective: Equal Turns & Straights*
- *Objective: Wider Soccer & La Crosse*
- *Objective: Fewer Posts Outside of Track*



Design Considerations

TRACKS

Narrow Style:

- Older design
- Based on Yards
- Accommodates Football

Equal Turns & Straights:

- Accommodates wider fields
- Based on Meters

Broken Back:

- Utilizes 8 different radius points for turns
- Accommodates widest fields
- Less common

FIELD TURF

Traditional Top Soil:

- Stock piles existing top soil for reuse on field
- Shallow roots

Sand / Peat Prescribed:

- Better drainage
- Deeper root system
- More durable turf

Synthetic Turf:

- Greatest use potential
- Requires drainage design
- Different maintenance
- Will need to replace surface periodically

Option A: Identical Layout



- Rebuild 9 Lane Track + Rebuild Long Jump, High Jump
- Field remains narrow (170' +/-)
- Improved Drainage
- Replace Lights with (4) New Poles
- Bleachers remain in place

Option B: Wider Field / Track



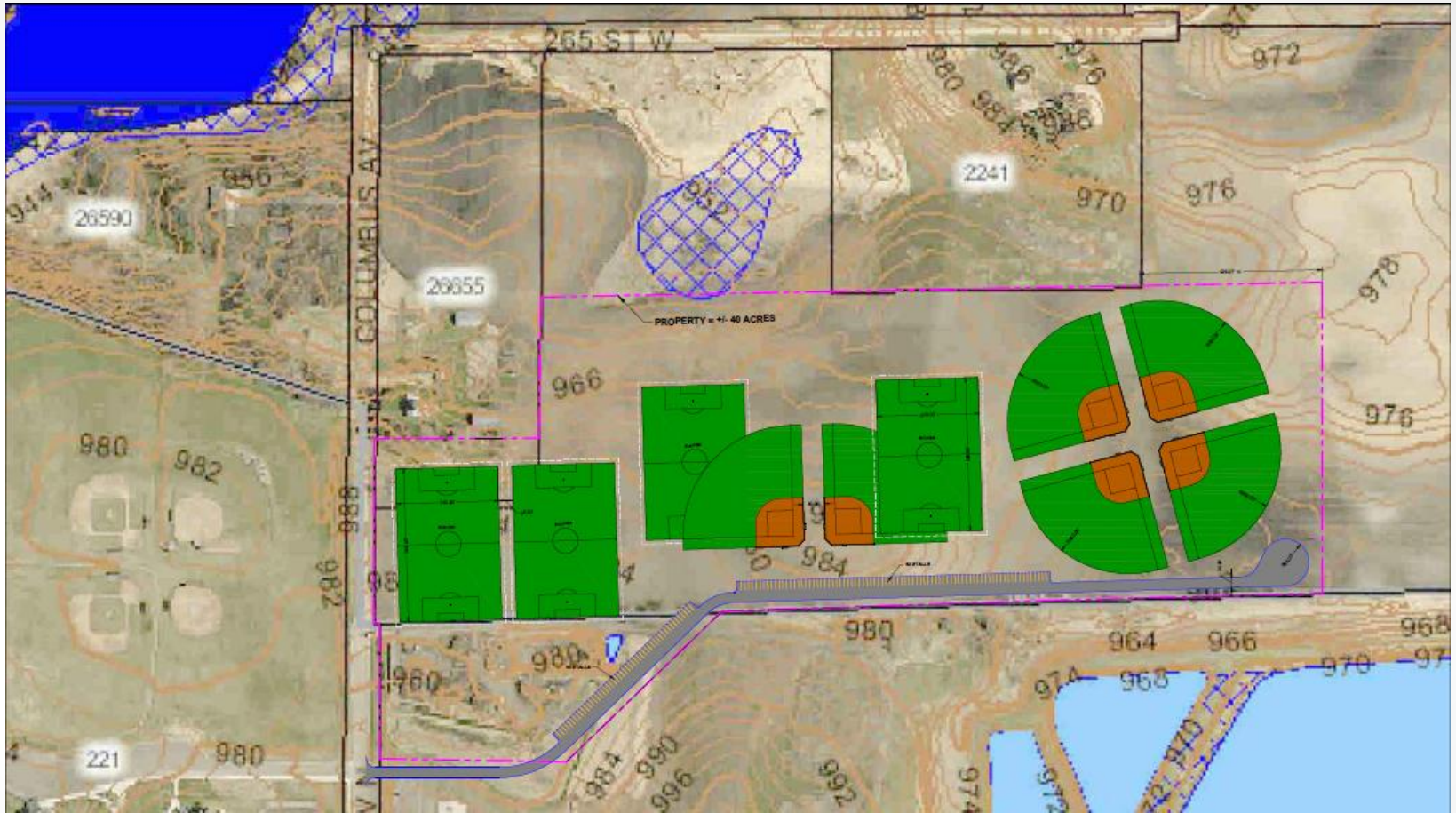
- Rebuild and Widen 9 Lane Track + Rebuild Long Jump, High Jump
- Field widened to 200'
- Improved Drainage
- Replace Lights with (4) New Poles
- Bleachers remain in place

Option C: Broken Back Track



- New Track Design + Rebuild Long Jump, High Jump
- Field widened to 220'
- Improved Drainage
- Replace Lights with (4) New Poles
- Visitors Bleachers must move to accommodate

40 Acre Conceptual Diagram



- Mixture of Softball, Soccer, Other TBD
- Some road & parking development
- East of High School Practice Fields, North of Water Treatment

District Requested Options



1. Replace Track As-Is

- Does not replace lights, etc.
- Improves drainage
- Project Cost: \$760,000

District Requested Options



- 2. Replace Existing Field with Synthetic Turf**
 - Replaces Existing Lights with (4) New Poles
 - Improves Drainage
 - Project Cost: \$1,200,000

District Requested Options



3. **New Wider Track, New Lights, Synthetic Turf**
 - Assumes Equal Turns & Straights (*Not Broken Back*)
 - Visitor Bleachers Remain In Place
 - Project Cost: \$2,400,000

District Requested Options



3B. New Wider Track, New Lights, Synthetic Turf

- Broken Back Track
- Visitor Bleachers Relocated
- Project Cost: \$2,750,000



District Requested Options Variations

4. **Lights & Bleachers on Existing Soccer Field**
 - 300 – 400 Seating Capacity
 - Project Cost: \$500,000 - \$600,000

5. **Create a New Competition Soccer Field**
 - North of High School Potentially
 - Lights and Bleachers
 - Irrigation System
 - Project Cost: \$900,000 - \$1,100,000

6. **Develop 40 Acres East of High School**
 - Many Variables TBD
 - Does Not Include Land Acquisition
 - Project Cost: \$2,500,000 +/-

7. **Replace Press Box**
 - Assumes Prefabricated Unit
 - Project Cost: \$75,000 +/-



- **Accurate Survey and Soil Conditions**
- **Greater Detail / Input from Athletic Community**
- **Consideration of Additional Options?**



Questions & Answers